

5-SCREEN MODELS - Single, Twin and Three Fans

CLIPPER

GRAIN CLEANERS

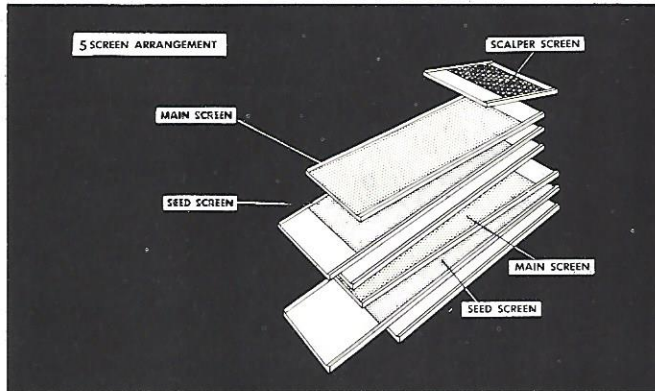
Built especially for: Grain Elevators—Terminals—Flour Mills—Feed Mills—Corn, Oats, Cereal Grains, Rice and Soybean Plants.

Used for: Receiving, Market Cleaning, Aspirating, Re-cleaning, Salvaging and Reconditioning.

CAPACITIES—Market Cleaning Wheat—2,000 to 3,000 bushels per hour. (listed on page 6)

Three Designs Covered by This Series —

Wood Construction	Steel Construction
Twin suction at head and tail	
2248-DW2A	2248-DW2AS
2249-DW2A	2249-DW2AS
Single head suction	
2248-DW	2248-DWS
2249-DW	2249-DWS
Twin suction and bottom blast fan	
Super G-2248-BDW	Super G-2248-BDWS
Super G-2249-BDW	Super G-2249-BDWS



86 inch long screens come in 3 sections.

SPECIAL FEATURES

1. Screen Arrangement — A 54 inch wide x 34 inch long scalper screen is attached to the top shoe to quickly eradicate the leaves, pods, sticks, stems etc.

Two identical shoes carry one main and one seed screen each. Each shoe handles one half the rated capacity of the cleaner by means of "split flow" principle.

The screens pull from the hopper end and the screen cleaning nylon brushes change and adjust without special tools. Double automatic screen cleaning nylon brushes are installed under both main screens and both seed screens. A knocker arrangement is installed under the scalper screen.

Screens in all Clipper models change at the rate of "one a minute."

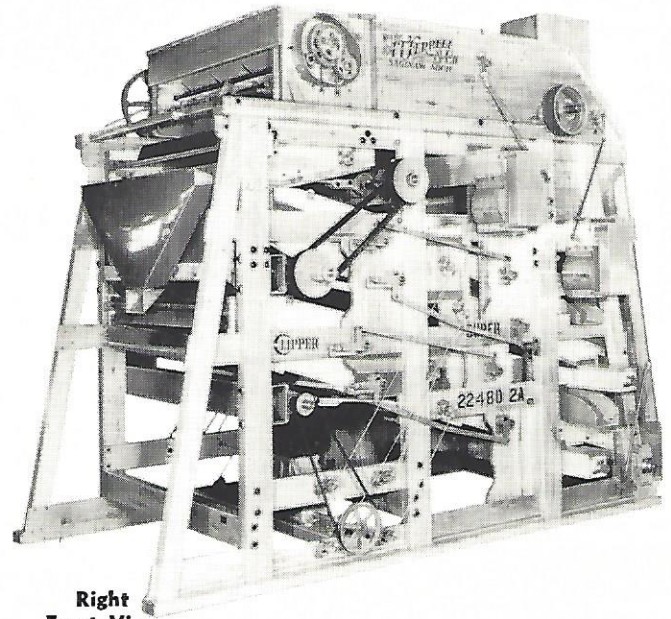
2. Aspirating—(Refer to paragraph under heading "Design" on page one)

2248-DW2A (featured)—Twin air—one powerful, precisely controlled head suction fan is applied where the grain flows from the hopper.

The second powerful suction is applied at the point of cleaned grain discharge to remove dust and light matter which escapes the first suction or is generated by processing. This bottom air is also precisely adjustable; thereby permitting close additional air separations by weight.

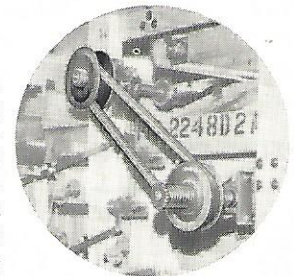
2248-DW—Two powerful head suction fans draw air up and through the curtain of grain as it leaves the feed hopper, making a close single air separation and quickly removing lightweight impurities before they can enter the cleaner. Heavier material settles and is conveyed to a sealed side rotary valve discharge by an auger.

2248-BDW—Triple air—one powerful head suction fan is applied as on the 2248-DW and DW2A where the grain flows from the hopper. The second large suction fan on this model ties in with the Clipper Bottom Blast Fan at the point of cleaned grain discharge. Its functions are to make a precise screenings separation by weight and to boost the bottom blast velocity to convey the light undesirable matter on out to the collector. The Bottom Blast is a variable speed controlled fan which makes a more precise final air separation (by weight) than can be done with any other device.



Right Front View

BIG CAPACITY 2248-DW2A Market Cleaner with top and tail suction. Twin air permits better cleaning at market capacities and permits close cleaning if desired.



Variable Screen Shake

3. Variable Screen Shake—(Standard construction—all 12 models) Adjust—Set—Forget it (until different speed is essential). This 2248 Series feature is an additional, precise screen motion control which provides the right shake to suit the stock being cleaned—this means increased screening efficiency and capacity.

4. Design—The construction of this series is developed with primary consideration given to the saving of floor space. Virtually, the 2248-DW cleaner is two cleaners stacked in a single frame, built for high capacity duty. The product is split fed, an equal amount going to each shoe. Shoes are expertly counterbalanced to allow the right amount of snappy shake yet the vibrations are cancelled out in the frame to where they are practically undetectable to sight and touch. In the Spring of 1963 further counter-balanced improvements were designed into this series by weighting the bottom shoe, and at this time the letter "W" was added to the model number. This factor is important as to cleaning effectiveness without excess noise, strain on the frame, loss of "action" and wear.

Each one of these models is equipped as a part of standard construction, with a special divider valve which at a moment's notice permits the cleaner to be screened to run two separate commodities such as wheat and corn (one at a time) without the bother of re-screening. This feature is only of value where full capacity is less important than being able to handle two products at random.

5. Spouting—The spouting can be handled on either side of the cleaner as the customer desires.

Cleaned grain discharges from a 6 inch wide opening across the full width under the rear of cleaner. Augers are used throughout the construction to force-feed the undesirable trash.

Standard Clipper Features are fully described on page one.

Specifications and Operational information on reverse side

5-SCREEN MODELS - *Single, Twin and Three Fans*

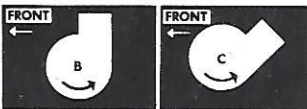
OPERATION

Construction and dimensions apply to either wood or all-steel construction.
Detailed construction prints on request.

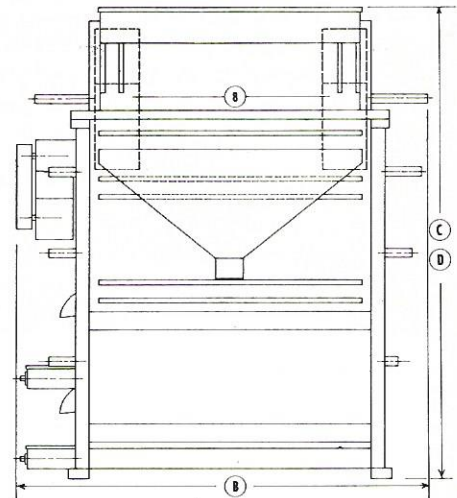
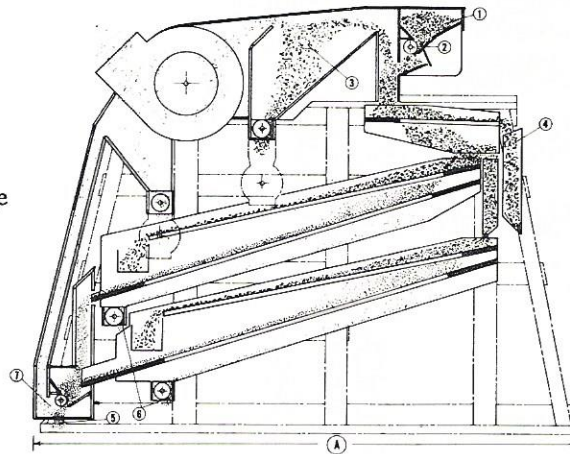
LEGEND

1. Feed Hopper
2. Hopper Feed Roll
3. Undesirable Liftings
—Head Suction
4. Tailings—Scalper
5. Clean Grain Discharge
6. Thrus—Seed Screens
7. Undesirable Liftings
—Tail Suction
8. Twin Suction Air Discharge

STANDARD FAN POSITIONS



Elbow segments available for various other angles at additional cost.



A clean-out door is installed on top of the air chamber in back of the bottom fan housing, making it easier to clean out the fan drum and prevent grain mixtures.

Flow—

Hopper Roll Feed Brush design explained on page one feeds grain evenly to scalper screen

Top Suction removes, settles off and discharges light impurities

Scalper Screen pre-scalps ahead of main screen

Main Screens 86 inches long equipped with pair of automatic brushes—each section changes in one minute

Seed Screens 86 inches long equipped with pair of automatic

brushes—each section changes in one minute—extra length permits increased screening effectiveness.

Tail Suction (in 2248-DW2A) applied at point of cleaned grain discharge (precision adjustable)

Cleaned Grain Discharge—opening six inches wide across full width under rear of cleaner

One complete set of screens to fill cleaner grooves (customer's choice) included in cleaner price—see screen listing on back page.

SPECIFICATIONS

	2249-DW2A		2249-DW		G-2249-BDW		2248-DW2A		2248-DW		G-2248-BDW	
	W	L	W	L	W	L	W	L	W	L	W	L
Screen Size (in.)												
Scalper	42	34	42	34	42	34	54	34	54	34	54	34
Main	42	86	42	86	42	86	54	86	54	86	54	86
Seed	42	86	42	86	42	86	54	86	54	86	54	86
Capacities (bu. per hour)												
Wheat, Soybeans, Corn												
Coarse Screens	2250		2250		2250		3000		3000		3000	
Medium Screens	1850		1850		1850		2500		2500		2500	
Fine Screens	1100		1100		1100		1500		1500		1500	
Oats, Barley, Rice												
Coarse Screens	1850		1850		1850		2500		2500		2500	
Medium Screens	1400		1400		1400		1850		1850		1850	
Fine Screens	750		750		750		1000		1000		1000	
(A) Overall Length (in.)	139¼		136		163		139¼		136		163	
(B) Overall Width (in.)	84		84		84		90		96		96	
(C) Overall Height (in.)	110¾		105		122		110¾		105		122	
(D) Grain Inlet Height (in.)	110¾		105		122		110¾		105		122	
Drive Shaft r.p.m.	1000		900		1000		1000		900		1000	
Required H.P. (1750 r.p.m.) ..	10		7½		10		10		7½		15	
Drive Shaft Dia. (in.)	1½		1½		1½		1½		1½		1½	
Approx. Ship. Wt. Wood (lbs.)	5100		4000		5700		5700		4400		6300	
Approx. Ship. Wt. Steel (lbs.)	5800		4800		6700		6100		5400		7300	
Fan Outlet (inside dim. in.)	7½ x 17¾		7½ x 17¾		9¼ x 17¾		11¼ x 17¾		9¼ x 17¾		11¼ x 17¾	
Total C.F.M. (ea. fan)	3000		2310		3000		3390		3000		3390	
Recommended Clipper Collector	18		16		18		20		18		20	
(one for two fans)												

For lesser capacities review details of our 2-screen and 3-screen models on pages 3 and 4.
For double these capacities see the Quad Super 4488-DS (page 7).