

AMERICA'S FIRST  
AND ONLY TWIN-SPIRAL,  
TWO-SPEED MIXER!



**PRATER**

*Blue Streak*

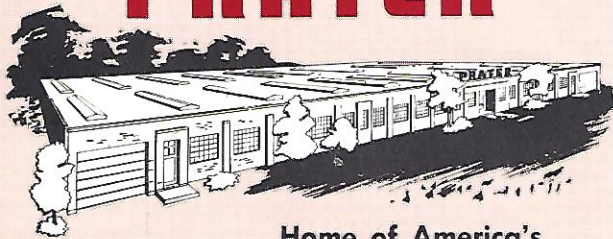
**TWIN-SPIRAL MIXER**

# Blue Streak

## TWIN-SPIRAL MIXER

by

# PRATER



Home of America's  
Finest Milling Equipment!

It takes all three . . .  
GOOD GRAIN . . .

PROPER SUPPLEMENTS . . .

PERFECT BLENDING!

One without the other is mere extravagance . . .  
a needless waste of time and money!

It is your place, as a sound businessman and friend of the farmer, to safeguard against any shortcomings that may seriously affect the feed-gain ratio of your feeder customers. In giving careful thought to the three essentials of efficient animal production — GOOD GRAIN . . . PROPER SUPPLEMENTS . . . PERFECT BLENDING — one discovers an all-important quality basic to all. That of uniformity! Perhaps in that one word, *uniformity*, the key to success in mixing has been uncovered. *Uniformity* of blend . . . uniformity of results!

Today's highly competitive market conditions make it more important than ever that every batch of feed is formulated with good quality, high potency concentrates. And for these vital and expensive materials to do the job which their inherited ability permits, they *must* be thoroughly and uniformly dispersed throughout the entire batch. Any irregularities may result in a digestive setback to the animal . . . a *market setback to your customer* . . . and a *financial setback to you*.

a *Blue Streak* Mixer is years ahead!

When so much depends on *uniformity*, isn't it dollars and sense to use the one, dependable feed mixer with an unequalled record for consistency . . . Prater's fabulous *Blue Streak* Twin-Spiral Mixer! Here is an entirely different vertical feed mixer . . . featuring a *radically new and improved principle* of operation that insures a *perfect, uniform blend* — everytime. And it does it faster and more efficiently than any other mixer built today!

With its exclusive two-speed, two-spiral, forced-flow action, the *Blue Streak* breaks up layers in the mix before they form . . . completely eliminates "streaks" or unblended segments of feed. Through every phase of the mixing cycle, there is constant agitation, constant mixing at varying speeds, constant intermingling of the materials from spiral to spiral. The final result is the same day-after-day, year-after-year: a complete and rapid intermixture of all materials into a homogenous mass of uniform analysis . . . with every pound of feed carrying the full and correct ratio of each life-giving material.

Today's high potency antibiotics and vitamins being injected into feed in the ratio of grams-to-the-ton, requires a Prater *Blue Streak* Twin-Spiral. It is the only mixer from which you can expect a *complete, even distribution* . . . time after time after time!

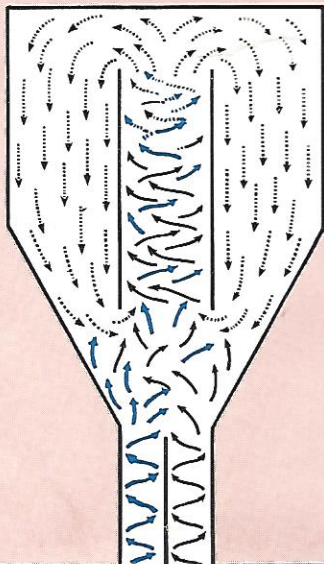
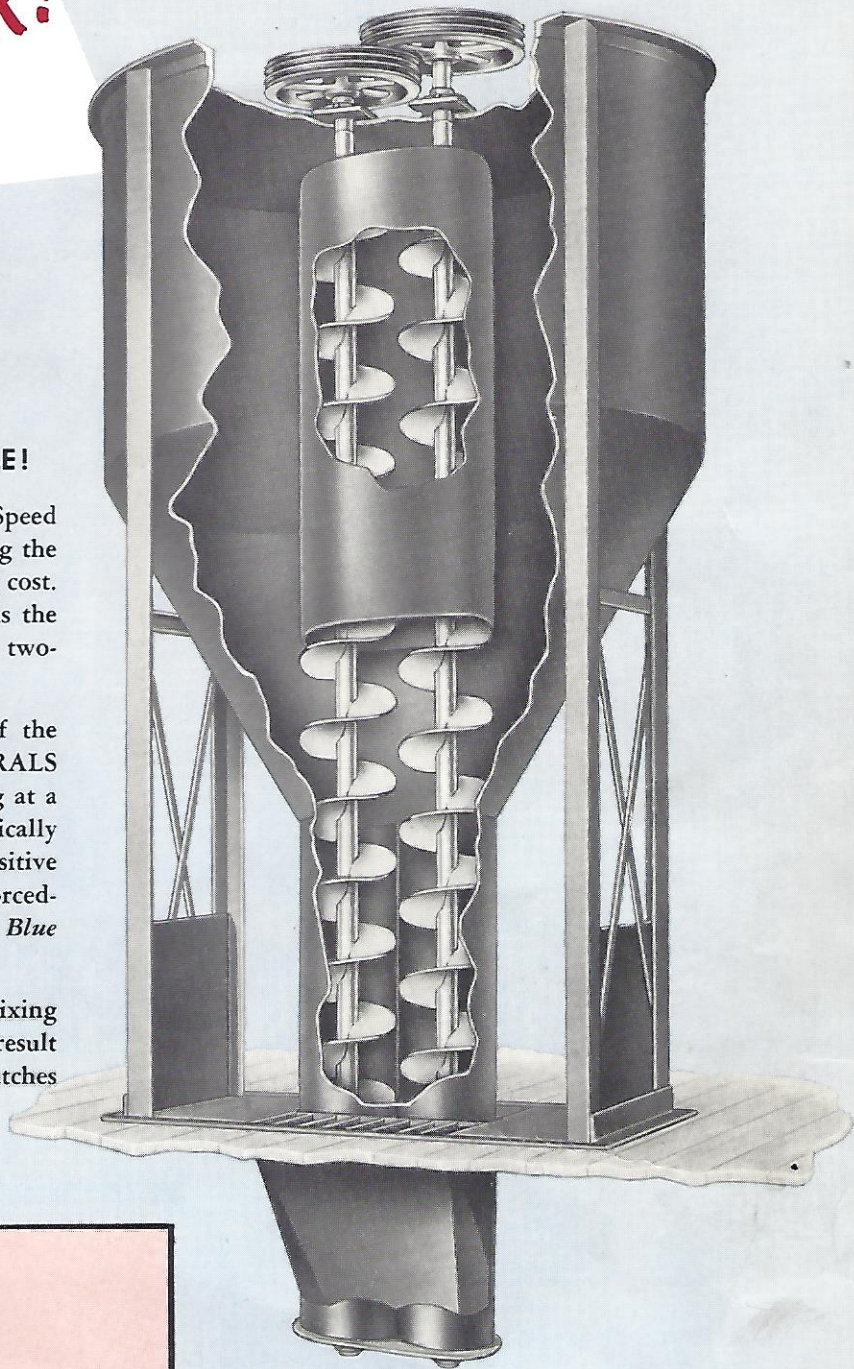
# AMERICA'S FIRST AND ONLY TWIN-SPIRAL, TWO-SPEED MIXER!

**DOUBLES YOUR CAPACITY PER HORSEPOWER HOUR... DELIVERS A COMPLETE, MORE UNIFORM BLEND... CONSISTENTLY DEPENDABLE!**

Ten years from today the *Blue Streak* Twin-Spiral Two-Speed Mixer will still be years ahead in design . . . still leading the way to perfect blending, better service at lower operating cost. And the big reason for this overwhelming superiority is the exclusive patented Prater advancement of two-spiral, two-speed control.

*Blue Streak's* dual-action mixing means that instead of the ordinary one spiral and one speed, there are **TWO SPIRALS** revolving within the mixer at all times, each performing at a **DIFFERENT SPEED** . . . constantly tossing and mechanically mixing the materials together producing the most positive action found in any mixer. The efficiency of this forced-blending is fully demonstrated in the even coloring of *Blue Streak* mixed feed.

This ingenious double-mixing action also produces fast mixing—faster than any other mixer could ever offer. The net result is a perfectly blended batch in one-half the time; more batches per day. It also means that your customers spend far less time waiting for the batch to be mixed.



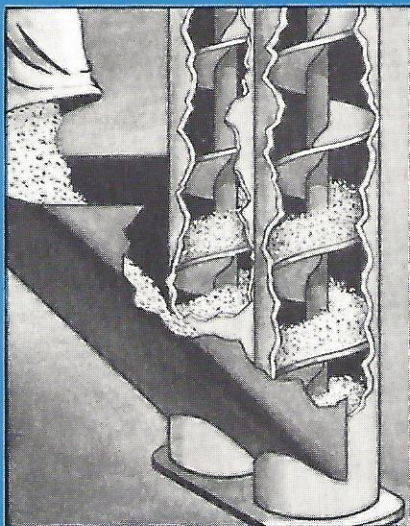
## SEE HOW THE BLUE STREAK MIXES BETTER!

This diagram charts the path of the *Blue Streak* Twin-Spiral mixing cycle. The black arrows show the course of the material handled by the faster spiral; the blue, the material handled by the other; and the dotted lines show how the blended material is thrown out at the top to re-enter the mixing cycle.

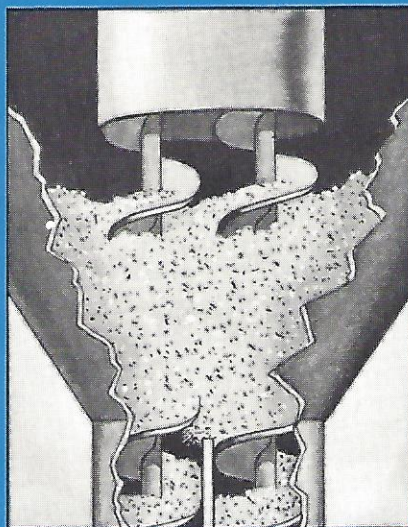
**BLUE STREAK**  
**Prater**

## THE PRINCIPLES OF TWIN-SPIRAL MIXING

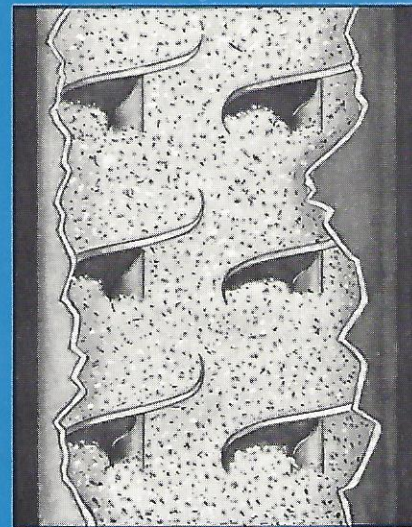
How the *Blue Streak* Mixer—the only one of its kind—brings efficiency to your operation!



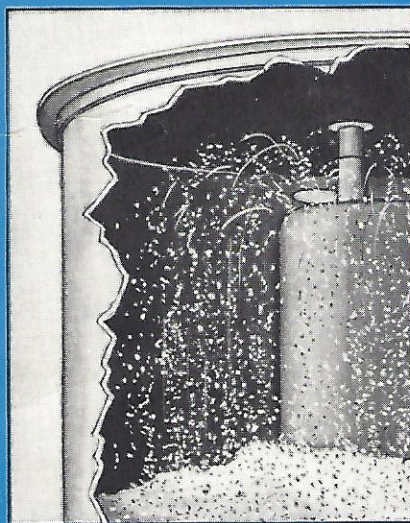
**FASTER LOADING** A bag is up-ended into the loading hopper of a *Blue Streak* and almost immediately its contents are gone, loaded into the mixing chamber by the two large 12 inch spirals—resulting in faster loading, faster mixing.



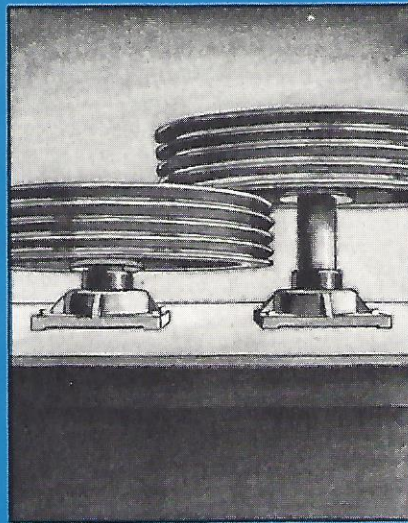
**INSTANT ELEVATION** Large 12 inch spirals instantly deliver the materials up into the inner-mixing chamber and instead of depositing the feed in layers, a constant interchange of materials starts immediately as the first materials reach the cone section. This action continues as the mixer is constantly loaded to the bottom line of the oval housing.



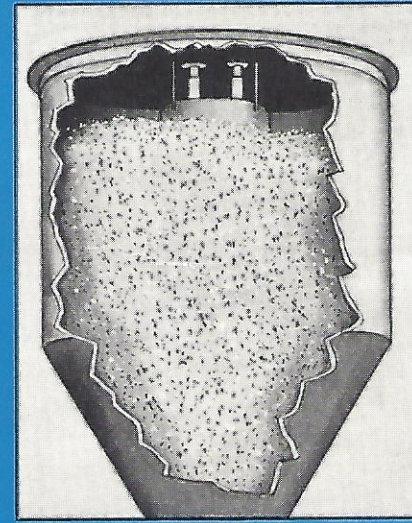
**CONTINUOUS MECHANICAL MIXING** Lifted rapidly at different speeds, the materials are tossed and tumbled from one spiral to the other. Here is fast, mechanical mixing of materials taking place in the oval housing. This inner-mixing chamber is an exclusive and fully patented feature of the *Blue Streak* Twin Spiral Mixer.



**CONTROLLED REMIXING** On reaching the top of the oval housing, the materials are tossed in different directions at different speeds and against the sides of the mixer. Falling on the batch, they automatically re-enter the cycle for still further blending. This process is repeated as needed, depending upon the formula or type of feed.

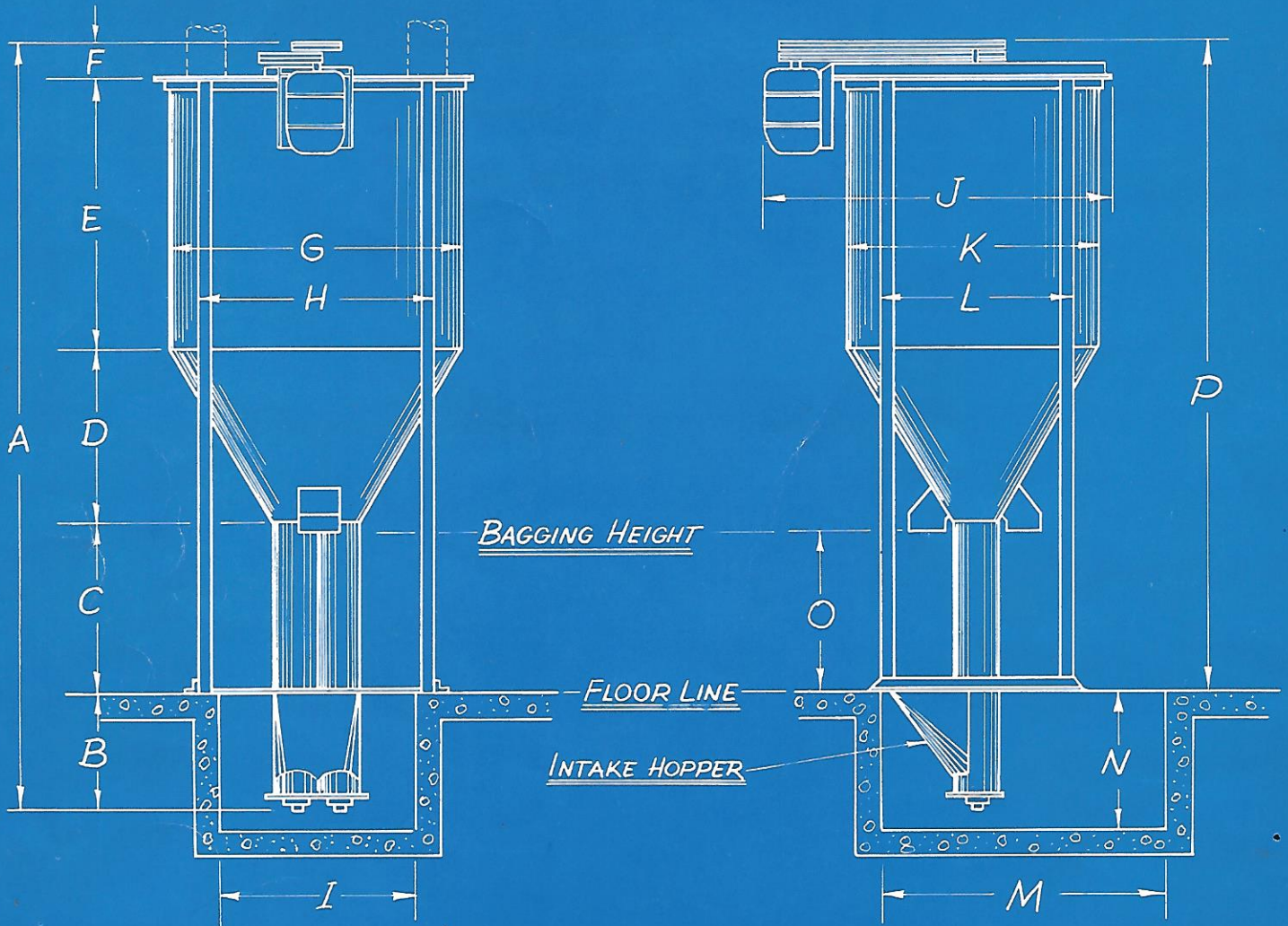


**QUIET OPERATION** Twin, load-carrying ball bearings at the top and bottom—lubricated for life. And silent "V" belt drive holds noise down to a whisper. No growling, no grumbling—just smooth-running performance!



**HIGH CAPACITY** *Blue Streak's* twin-spiral, two-speed mixing means more capacity per horsepower hour . . . more tons per day . . . more satisfied customers . . . lower power costs! Two *Blue Streak* Mixers mean even greater economy—with the extra mixer serving as a pre-mixer or holding bin. Available in sizes from ½ to 5 tons, with plenty of reserve capacity.

# CAPACITIES AND DIMENSIONS OF THE *Blue Streak* TWIN-SPIRAL MIXER



| MODEL     | A         | B    | C     | D        | E         | F        | G        | H         | I    | J    | K        | L        | M        | N    | O        | P         | SIZE OF MIXER<br>EFFECTIVE VOLUME |
|-----------|-----------|------|-------|----------|-----------|----------|----------|-----------|------|------|----------|----------|----------|------|----------|-----------|-----------------------------------|
| 1/2 TON   | 10'2 1/2" | 1'9" | 2'10" | 2'7 1/2" | 2'6"      | 0'6"     | 3'11"    | 3'2"      | 2'6" | 4'9" | 3'4"     | 2'6 1/2" | 5'0"     | 2'3" | 2'7 1/2" | 8'5 1/2"  | 38 cu. ft.                        |
| 1 TON     | 13'1 3/8" | 2'4" | 2'11" | 3'8"     | 3'6"      | 0'9 3/4" | 5'9"     | 4'6 3/4"  | 3'9" | 6'3" | 4'8"     | 3'5 3/4" | 6'0"     | 3'0" | 2'10"    | 10'9 3/8" | 82 cu. ft.                        |
| 1 1/2 TON | 14'7 3/8" | 2'4" | 2'11" | 3'8"     | 5'0"      | 0'9 3/4" | 5'9"     | 4'6 3/4"  | 3'9" | 6'3" | 4'8"     | 3'5 3/4" | 6'0"     | 3'0" | 2'10"    | 12'3 3/8" | 120 cu. ft.                       |
| 2 TON     | 15'6"     | 2'4" | 2'11" | 4'1 1/4" | 5'0"      | 1'1 3/4" | 6'2 1/8" | 4'10 7/8" | 3'9" | 6'9" | 5'1 1/8" | 3'10"    | 5'6 1/2" | 3'0" | 2'10"    | 13'2"     | 151 cu. ft.                       |
| 3 TON     | 19'0"     | 2'4" | 2'11" | 4'6 1/2" | 7'10 1/2" | 1'2 1/4" | 7'1"     | 5'7 1/8"  | 5'0" | 8'6" | 6'0"     | 4'8"     | 7'6"     | 3'0" | 2'10"    | 16'6"     | 314 cu. ft.                       |
| 5 TON     | 21'9"     | 2'4" | 2'11" | 4'6"     | 10'4"     | 1'8"     | 7'1"     | 5'8"      | 4'8" | 8'6" | 6'0"     | 4'8"     | 7'6"     | 3'0" | 2'10"    | 19'5"     | 414 cu. ft.                       |