



THE MARK OF QUALITY SINCE 1902

OPERATOR'S INSTRUCTIONS AND PARTS LIST

OWNER: TROY J. SPERIN, ORVAN SCHROCK

SERIAL NUMBER(S): 16" HERITAGE STONE BURR MILL

#16-34052-08

#1 ELEVATING FAN - #1F-2473-08

**MEADOWS MILLS, INC.
1352 WEST D STREET
PO BOX 1288
NORTH WILKESBORO, NC 28659
TOLL FREE: 1-800-626-2282
TELEPHONE: 336-838-2282
FAX: 336-667-6501
EMAIL: meadowsmills@charter.net
WEBSITE: www.meadowsmills.com**

Heritage Stone Burr Mills

1902 - 2002

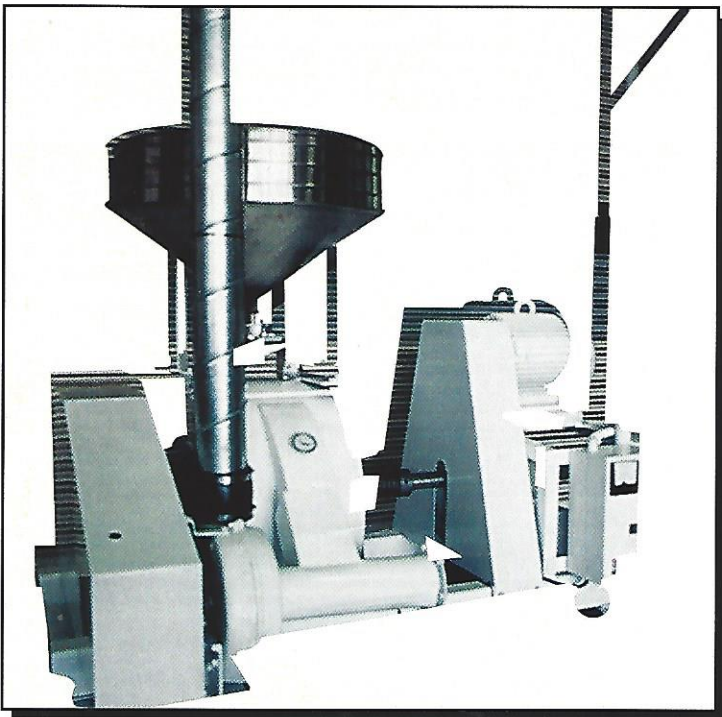
100 Years of Building the Finest Milling Equipment
Treat your customers to the finest flour or cornmeal available.

30" Heritage Mill

Steel housing with stainless steel hopper, 25 HP motor and starter. Elevating fan with drive. Natural pink granite stones.



Pictured as 30" Heritage Stone Burr Mill, also available in 12", 16", 20", and 24" models.



Meadows Mills, Inc.
"Mill Manufacturers since 1902"

1352 West D Street • Post Office Box 1288 • North Wilkesboro, North Carolina 28659
Phone: (336) 838-2282 • Fax: (336) 667-6501 • 1-800-626-2282

The Meadows Heritage is the finest stone burr mill ever built. It will grind any clean, dry, free flowing grain to the desired consistency. A permanent magnet in the grain receiver is a final safe guard preventing any metallic material from spoiling the final product. Equipped with an optional elevating fan, collector, air return or filter bag, the Meadows Heritage will produce a cooler, fluffier ground product enhancing the desirability of the flour or corn meal.

Despite centuries of scientific advancement, the age old method of stone grinding remains the best grinding method known. Lower grinding temperatures allow enzyme activity to continue and the stone grinding method provides finer flakes that give more flavor. Totally natural live flour or corn meal with unmatched flavor is the result. Treat your customers to a wholesome taste they will never forget with a Meadows Heritage Stone Burr Mill.

Size Diameter of Burrs	Required Horse Power	Capacity in LBS Per Hour		RPM of Drive Shaft Assumes 1745 RPM Motor	Diameter of Main Shaft
		Fine	Medium		
12"	5.0	110	150	700	1 11/16"
16"	7.5	150	250	680	1 11/16"
20"	10.0	300	400	690	1 11/16"
24"	15.0	500	700	625	2 3/16"
30"	25.0	700	1250	625	2 3/16"

Size Diameter of Burrs	Length	Width w/Fan	Width w/out Fan	Height w/Coll	w/out Coll
12"	36"	N/A	20"	N/A	36"
16"	56"	33"	26"	97"	54"
20"	56"	37"	29"	97"	54"
24"	66"	43"	36"	100"	65"
30"	66"	47"	39"	100"	65"

Size	Hopper Capacity in LBS		Approximate Weight in LBS for Mill Only	
	Wheat	Corn	Net	Crated for Domestic Shipment
12"	60	55	350	425
16"	120	110	900	1000
20"	120	110	1100	1200
24"	120	110	1500	1650
30"	120	110	1900	2200

For all mills we offer the following:

V-Belt Drives, Electric Motors and Starters, Elevating Fans, Collectors, Air Returns, Filter Bags, Piping, Automatic Shut Off Switches, Dressing Tools, Air Hammer, Lubricating Equipment, and Thermometers.

STARTING AND OPERATING YOUR 12" MILL, 20" AND 30" CENTENNIAL - HERITAGE MILLS

WHEN YOU PLACED YOUR ORDER FOR YOUR MILL YOU MAY HAVE ORDERED IT WITH THE ELECTRIC MOTOR. IF SO, THE MOTOR IS MOUNTED ON THE MILL WITH THE MAGNETIC MOTOR STARTER. ALL OF THE WIRING IS COMPLETELY INTERNALLY. THE ONLY WIRING REQUIRED IS THE OUTSIDE POWER TO THE MAGNETIC STARTER. CHECK WITH YOUR ELECTRICIAN, BECAUSE DIFFERENT STATES HAVE DIFFERENT REGULATIONS.

AFTER THE WIRING IS COMPLETE YOU MUST MAKE SURE THE STONES IN THE MILL ARE NOT TOUCHING. THIS IS CHECKED BY TURNING THE LOCKING DEVICES ON THE FRONT OF THE MILL CLOCKWISE WHILE TURNING THE ADJUSTMENT SCREW APPROXIMATELY THREE (3) ROUNDS COUNTER CLOCKWISE. THEN TURN THE MAIN PULLEY COUNTER CLOCKWISE. MAKE SURE THE POWER IS DISCONNECTED. IF THE PULLEY TURNS, THE STONES ARE FREE. STONES ARE SHIPPED TOGETHER TO ELIMINATE ANY DAMAGE THAT COULD OCCUR DURING SHIPMENT.

IF YOU HAVE ORDERED YOUR MILL WITH AN ELEVATING FAN YOU MAY NOW HOOK UP THE PIPING. FIRST, PLACE THE COLLECTOR MOUNTING BRACKET INTO PLACE, THEN YOU SHOULD MOUNT YOUR COLLECTOR AND/OR AIR RETURN TO THAT BRACKET. YOUR PIPING IS CLEARLY MARKED IN THE SEQUENCE IN WHICH IT IS PLACED TOGETHER. IF YOU HAVE WELDED PIPE, DO NOT FORGET YOUR GASKET RINGS THAT GO BETWEEN EACH JOINT. THIS ELIMINATES ANY DUST FROM LEAKING THROUGH JOINTS. IF YOU HAVE LOCK SEAM PIPE, PUT IT TOGETHER AND TWIST THE WIRE TIES TOGETHER. PUT CAULKING IN THE JOINT BEFORE YOU SLIDE IT TOGETHER TO ELIMINATE LEAKS.

AFTER THESE STEPS ARE COMPLETELY YOU ARE NOW READY TO CHECK THE ROTATION OF YOUR MILL. THIS ROTATION SHOULD BE COUNTER CLOCKWISE FROM THE ADJUSTMENT SCREW OR THE SHAFT AND PULLEY SHOULD BE TURNING TOWARD THE DISCHARGE CHUTE.

THE BIN KILL SWITCH WILL NOT ALLOW THE MILL TO START UNTIL THE SENSOR HAS SOMETHING AROUND IT. IF YOU WANT THE MILL TO RUN WITHOUT GRINDING JUST TURN THE POWER ON AND TOUCH THE YELLOW SENSOR IN THE HOPPER. YOU WILL THEN HEAR A "CLICK", THIS MEANS THE SENSOR BELIEVES THERE IS SOMETHING IN THE HOPPER. THEN PUSH THE START BUTTON AND YOUR MILL WILL RUN APPROXIMATELY THREE (3) MINUTES. THIS SENSOR IS DESIGNED TO SHUT THE MILL OFF AFTER THE HOPPER IS EMPTY FOR THREE (3) MINUTES. THIS ALLOWS GRAIN IN THE MILL TO BE GROUND. NEVER SHUT THE MILL OFF WHILE IT IS GRINDING, IF YOU DO YOU MAY EXPERIENCE WHOLE GRAINS IN YOUR FLOUR. IF YOU HAVE GRAIN LEFT IN THE MILL AFTER THREE (3) MINUTES, REMOVE THE COVER ON THE BIN KILL SWITCH AND SET IT ON MINUTES

AND TURN THE DIAL TO FOUR (4) MINUTES TO BE SURE THE MILL EMPTIES BEFORE SHUTTING OFF.

THE NEXT STEP IS TO NOTICE THE SIDE ON THE BOTTOM OF THE HOPPER AND HOW IT WORKS. IT WILL ALLOW YOU TO ADJUST THE GLOW RATE. FLOW RATE WILL DETERMINE FLOUR TEMPERATURE AND ALSO THE CONSISTENCY OF YOUR FLOUR. IF YOU HAVE AN AMP METER ON YOUR MILL, NOTICE IT WHILE GRINDING. IF THE MOTOR IS PULLING MORE THAN THE RECOMMENDED AMPS DETERMINED BY THE AMP METER YOU PROBABLY EITHER HAVE YOUR STONES TOO CLOSE AND/OR FLOW RATE TOO HIGH AND THE MOTOR IS PULLING TOO HARD. BE SURE THE MILL STONES ARE APART BY TURNING THE KNOB COUNTER CLOCKWISE. TO START GRINDING, PUSH THE CUT OFF LEVER IN TO CLOSE IT. FILL THE HOPPER WITH GRAIN AND PRESS THE START BUTTON TO START THE MILL. TURN THE ADJUSTMENT SCREW CLOCKWISE UNTIL YOU HEAR THE STONES TOUCH. BACK THE STONES OFF BY TURNING COUNTER CLOCKWISE ONE EIGHTH (1/8) OF A FULL TURN. OPEN THE FEED AND BEGIN TO FEED GRAIN IN SLOWLY. CHECK YOUR FLOUR OR CORN MEAL TO SEE IF IT IS THE CONSISTENCY YOU DESIRE. IF IT IS TOO COARSE LOOSEN THE LOCK LEVER AND TURN THE ADJUSTMENT KNOB CLOCKWISE TO MOVE THEM APART. ADJUST THE STONE UNTIL YOU GET THE PRODUCT YOU DESIRE.

NEVER RUN THE STONES TOGETHER. THIS WILL DULL THE SHARPNESS OF YOUR STONES. TO GET THE FLOUR YOU PREFER TURN THE ADJUSTMENT END SCREW CLOCKWISE. WHEN THIS IS ACCOMPLISHED YOU SHOULD TURN THE LOCKING WHEEL CLOCKWISE.

PLEASE BE SURE TO NOT OVER GREASE THE THRUST BEARINGS ON EITHER SIDE OF THE MAIN HOUSINGS.

PLEASE BE SURE YOU RUN YOUR STONES IN AND OUT TWO (2) OR THREE (3) TIMES PER WEEK. THIS WILL ENSURE BEARINGS DO NOT STICK AND LUBRICATION IS SPREAD ALONG THE SHAFT.

USE A FOOD QUALITY OIL AND A HIGH TEMPERATURE FOOD QUALITY GREASE TO LUBRICATE YOUR MILL. THESE ITEMS ARE AVAILABLE FROM MEADOWS.

TOLERANCES $\pm 1/16"$
UNLESS OTHERWISE
SPECIFIED

DIMENSIONS : FT.-IN.

THIS DRAWING IS THE
PROPERTY OF MEADOWS
MILLS INC. USE OF
THIS DRAWING OTHER
THAN TO MANUFACTURE,
SELL, OR INSTALL
MEADOWS MILLS INC.
EQUIPMENT IS
PROHIBITED.



MEADOWS MILLS INC.

TITLE

NO. 1 FAN DIRECT DRIVE

SCALE

1/4"=1"

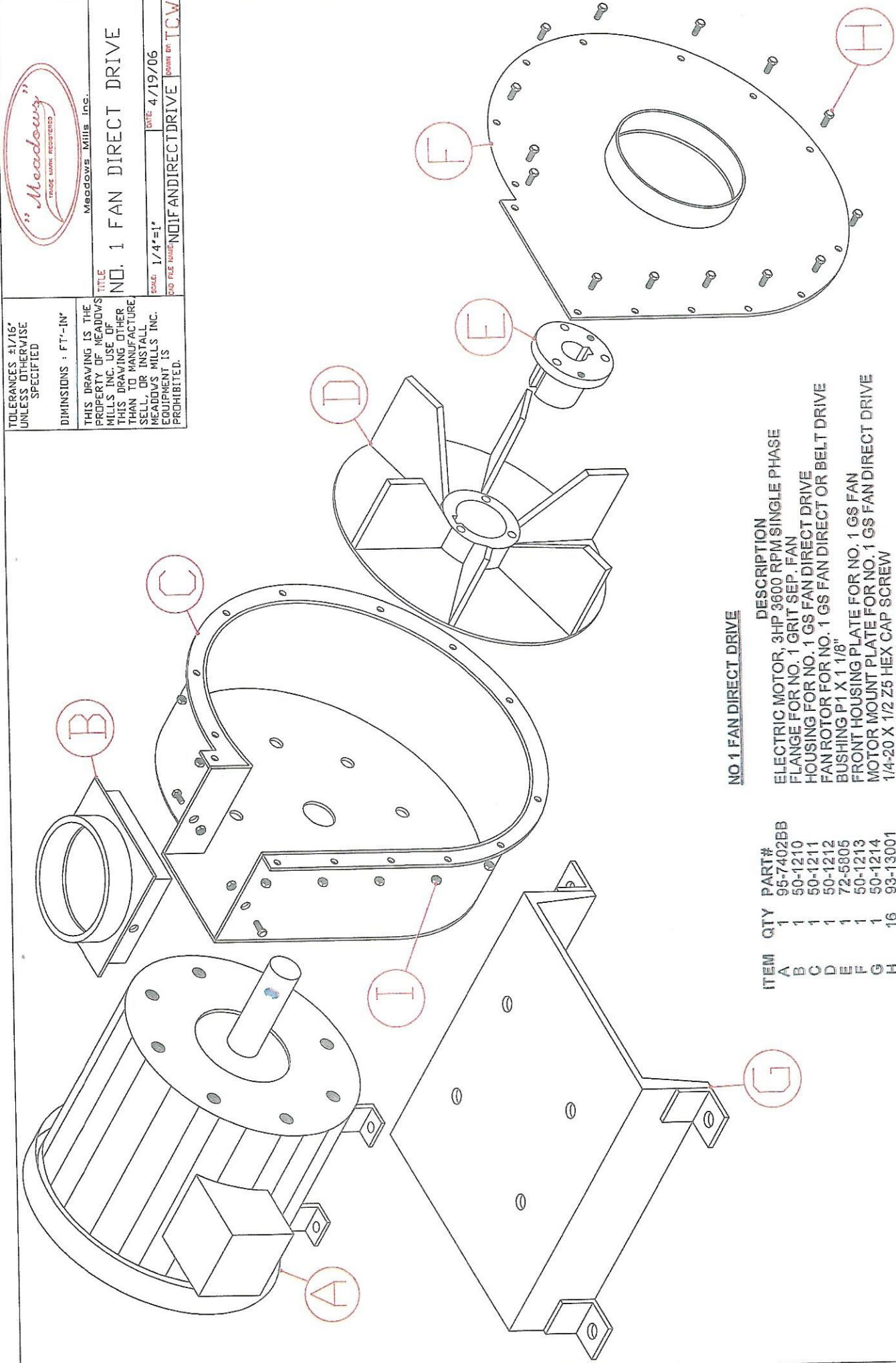
DATE: 4/19/06

DO FILE NAME

NO. 1 FAN DIRECT DRIVE

DATE: 4/19/06

DO FILE NAME



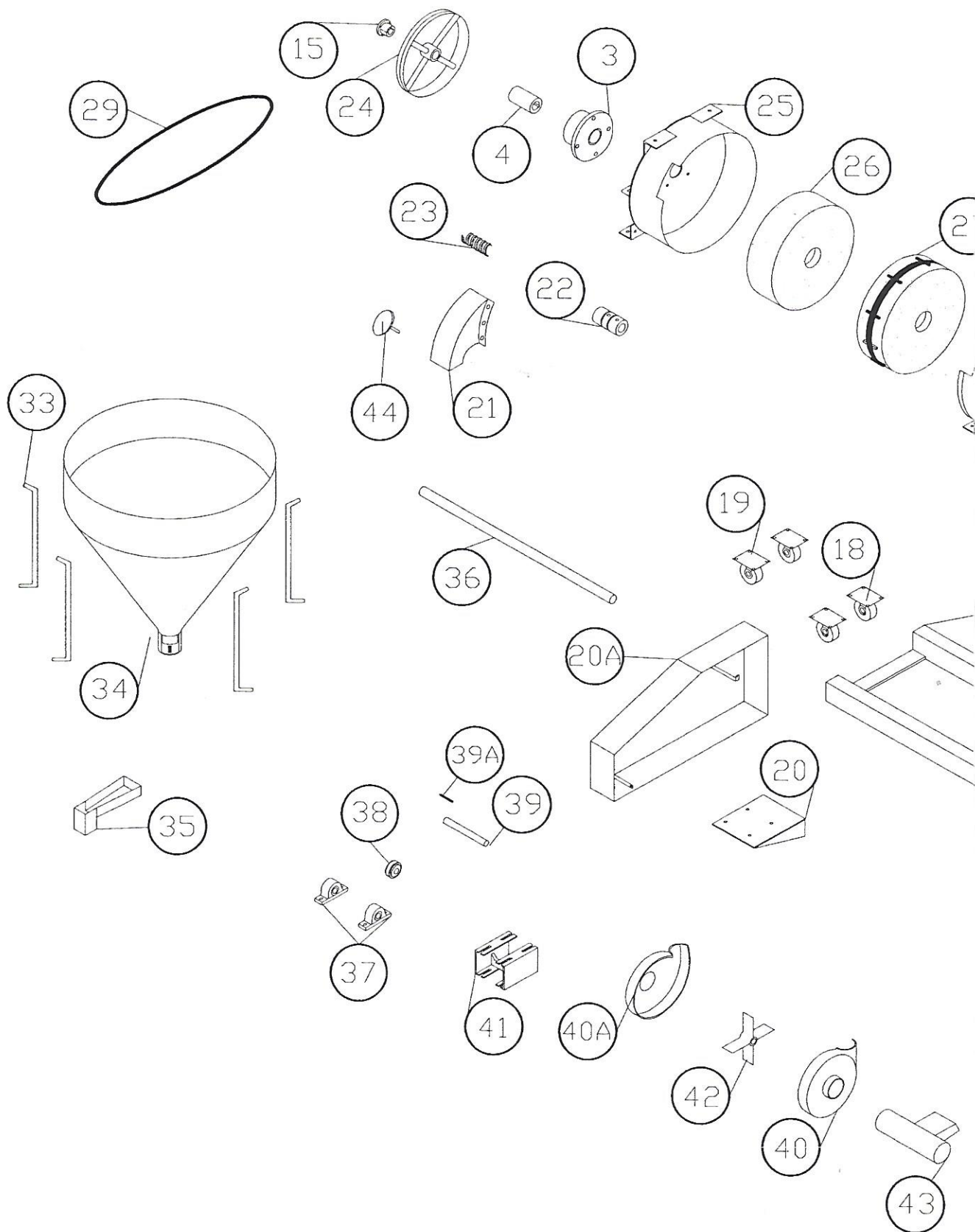
NO. 1 FAN DIRECT DRIVE

ITEM	QTY	PART#	DESCRIPTION
A	1	95-7402BB	ELECTRIC MOTOR, 3HP 3600 RPM SINGLE PHASE
B	1	50-1210	FLANGE FOR NO. 1 GRIT SEP. FAN
C	1	50-1211	HOUSING FOR NO. 1 GS FAN DIRECT DRIVE
D	1	50-1212	FAN ROTOR FOR NO. 1 GS FAN DIRECT OR BELT DRIVE
E	1	72-5805	BUSHING P1 X 1 1/8"
F	1	50-1213	FRONT HOUSING PLATE FOR NO. 1 GS FAN
G	1	50-1214	MOTOR MOUNT PLATE FOR NO. 1 GS FAN DIRECT DRIVE
H	16	93-13001	1/4-20 X 1/2 Z5 HEX CAP SCREW
I	16	93-36102	1/4-20 FIN HEX NUT

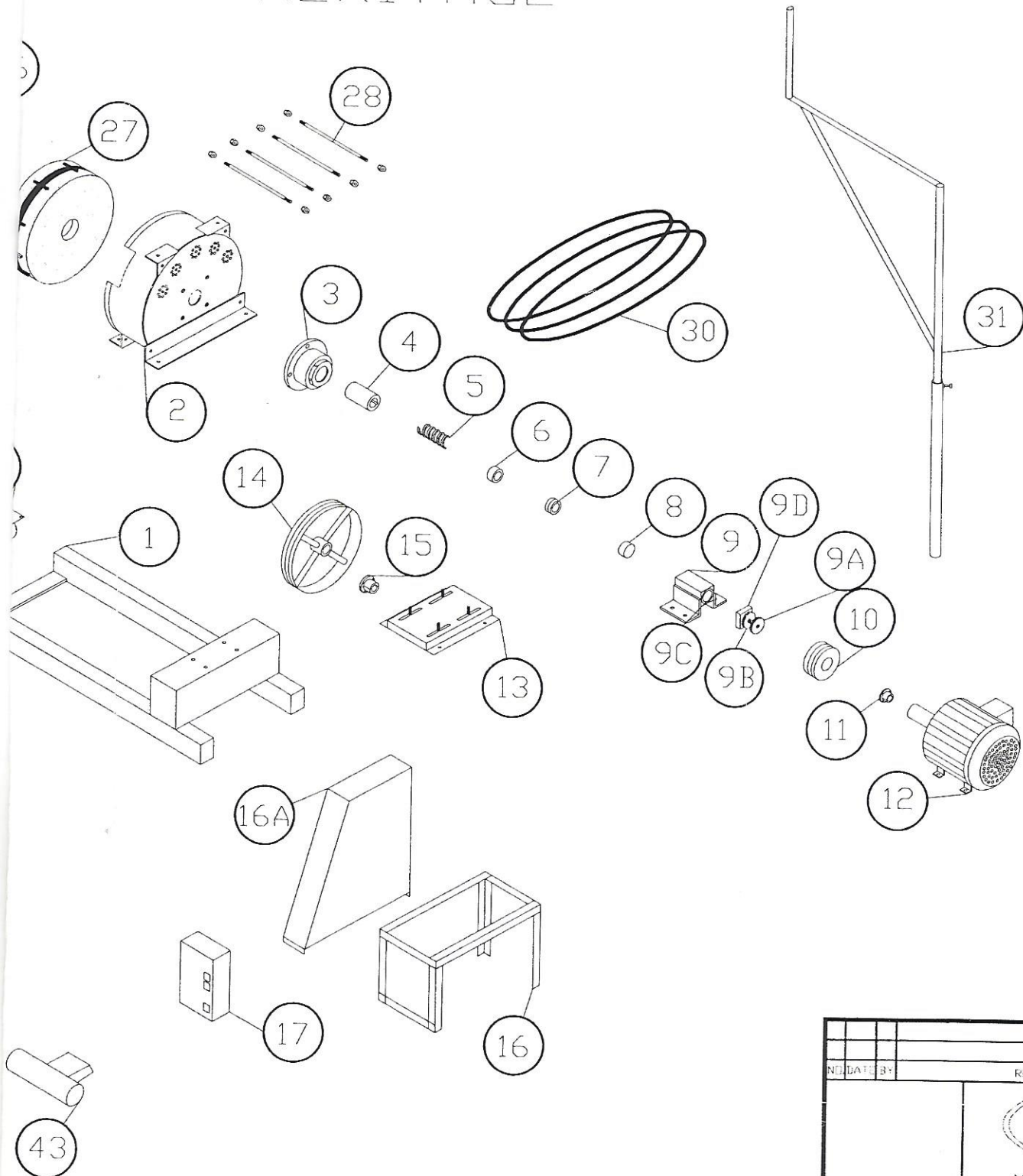
PARTS LIST
16" STAINLESS STEEL GRIST MILL
10-16HSBMO


			QUANTITY
1	10-1000B	WELDED STEEL FOUNDATION 16"C	1
2	10-1404	SS RUNNER STONE HOUSING	1
3	72-6017E	2 15/16 SCM 4BF BEARING	2
4	10-10339B	1-11/16 BORE x6-1/4" SLEEVE FOR TYPE BEARING	2
5	10-1033	COIL RELIEF SPRING	1
6	10-1036	RETAINING COLLAR	1
7	72-6032	THRUST BEARING	1
8	10-1148	FOLLOW BLOCK	1
*	10-1305D 16" C ADJUSTING BRACKET COMPLETE		
9	10-1305	THRUST BEARING HOUSING	1
9A	10-1018B	HAND WHEEL WITH THREADED ADJUSTING ROD	1
9B	10-1018A	LOCKING WHEEL	1
9C	10-1305A	BRASS BUSHING	1
9D	10-1305B	CAP FOR THRUST BEARING HOUSING	1
10	72-5708	2TB60 PULLEY	1
11	72-5806	P1x1-3/8" BUSH.	1
12	95-7407	7.5 HP MOTOR	1
13	95-7407C	BASE,7407,213T	1
14	72-5710	2TB154, MILL PULLEY	1
15	72-5811A	Q1x1-11/16" BUSH.	2
*	10-MOMO16	MOTOR STAND AND BELT GUARD	
16	10-1350	MOTOR STAND	1
16A	10-1351	MOTOR BELT GUARD	1
17		MAGNETIC STARTER	1
18	71-4022A	PIVOT AND LOCK CASTER	2
19	71-4022	PIVOT CASTERS	2
*	10-FAN16B	FAN MOUNTING BRACKET AND BELT GUARD BOLT ON	
20	10-1354	FAN MOUNT - BOLT ON - (16,20)	1
20A	10-1355	FAN BELT GUARD	1
21	10-1073	SS OUTFEED SPOUT 16"C	1
22	10-1055	HUB, RUNNER STONE 16,20	1
23	10-1058	FEED SCREW	1
24	72-5706E	1TB160 PULLEY	1

25	10-1400	BED STONE HOUSING	1
26	10-1063	BED STONE	1
27	10-1051	RUNNER STONE, BANDED, FACED & FURROWED	1
28	10-9302	HOUSING TIES 1/2" 1018CR RD, THREADED EACH END	4
29	72-5142	FAN BELT, B70	1
30	72-5144	B75 V-BELT, DRIVE BELT	2
31	10-COLBRA	COLLECTOR MOUNTING BRACKET	1
32	N/A	ITEM # NOT USED	
33	10-1408	HOPPER LEGS	4
34	10-1122A	HOPPER ROUND SS FOR 16" C	1
35	10-1123A	HOPPER SPOUT SS	1
36	10-1019A	SHAFT 1-11/16"x46" FOR 16" MILL	1
*	50-1ELFAN	GRIT SEPERATOR FAN COMPLETE	
37	72-6001	DODGE 2BPB 1 1/8" BEARINGS	2
38	72-5704	PULLEY BK40 X 1 1/8"	1
39	50-1197	FAN SHAFT 1 1/8" X 10-1/2"	
39A	50-1199	#1 FAN KEY 1/4 X 3"	1
40	50-1172	FAN HOUSING	1
40A	50-1173	FAN HOUSING	1
41	50-1198	FAN BASE	1
42	50-2095	FAN WHEEL	1
43	40-TSPOUT	TEE SPOUT	1
44	71-5650	THERMOMETER	1



16" STAINLESS HERITAGE



NO. DATE BY		REVISION	
		 Meadows Mills Inc.	
		TITLE 16CSBMD PARTS	
		DRAWN BY: CTS CHECKED BY: NONE DATE: 3/13/96	